

2019

Active Beauty

Visual Carrier Ingredients

Unispheres[®] and Unishapes



Unishapes

One step ahead in visual effects

This technology is based on a high-definition manufacturing process that creates 3D shapes which are:

- ▶ Highly reproducible (3.5 mm in size);
- ▶ Easy to incorporate into your formula;
- ▶ Free of any residues after application;
- ▶ Made with eye-catching colours...

... for an irresistible effect that will captivate and mesmerise!

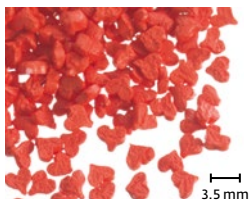


These tiny shapes magically disappear as you rub them in: delivered dry, they have the amazing properties to soften in the formula making them more malleable and ready to disintegrate when pressure is applied.

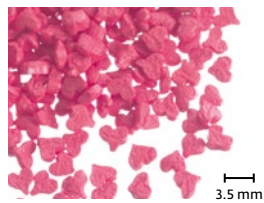
Easy to handle at the industrial scale, they do not contain preservatives. These exclusive shapes made for the personal care industry, are stable in many types of cosmetic products.

Our existing standards

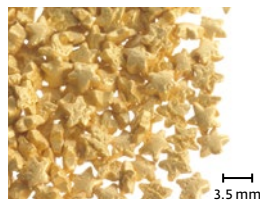
Basic ingredients (INCI): Mannitol (and) Cellulose (and) Acrylates Copolymer (and) Hydroxypropylcellulose



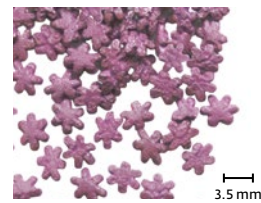
Unihearts R0-652C
3.5 mm red hearts...
...to add some passion
in your products!



Unihearts P0-651C
3.5 mm pink hearts...
... for a tender visual
effect.



Unistars D0-638C
3.5 mm gold stars...
... to make your products
shimmer!



Uniflowers L0-668C
3.5 mm lila flowers...
... for a blossoming
look!



Unibutterflies O0-798C
3.5 mm orange butterflies...
...for an inspiring and
poetic effect.

Applications

Unishapes can be used in many types of cosmetic products:

- ▶ **Body care:** shower gels, refreshing body gels, liquid soaps, hand sanitisers, bronzing creams;
- ▶ **Face care:** cleansers, creams, lotions;
- ▶ **Hair care:** shampoos, hair styling gels;
- ▶ **Intimate care:** personal lubricants, massage gels;
- ▶ **Oral care** (depending on pigments): toothpastes, tooth gels, mouthwashes.

Our customised solutions for Unishapes

As a world leader in high quality visual carriers, we offer an impressive range of customisation possibilities such as:

- ▶ Select among various pigments;
- ▶ Choose between matt or pearlescent finish.

For other customisations ask your sales representative or distributor.

Original Unispheres®

Basic ingredients (INCI): Mannitol (or Lactose[#]) (and) Cellulose (and) Hydroxypropyl Methylcellulose

[#]Animal origin (milk)

Aspect / Additives: Pearlescent (coated) / Matt (uncoated)
Individual pigment(s) / Individual active ingredient(s) - See table below

References	Vitamin E	Vitamin A	Q10	Colours - Size ¹	Aspect / Effect
Mannitol Original collection					
NT-2403*	✓	✓	-	● Small	Matt red
NTL-2412*	✓	-	-	● Large	Matt red
NT-2103	✓	✓	-	● Small	Matt blue
NT-2302	✓	-	-	● Small	Matt green
NTL-2312	✓	-	-	● Large	Matt green
NT-2502*	✓	-	-	○ Small	Matt white
NTL-2512*	✓	-	-	○ Large	Matt white
NT-2202*	✓	-	-	○ Small	Matt yellow
NT-2206*	-	-	✓	○ Small	Matt yellow
YE0M-554LG	✓	-	-	○ Large	Sparkling yellow / glitter layering
OE0M-759LC	✓	-	-	○ Large	Golden orange coating / alcohol stable
Mannitol Ocean collection					
White Shell NTL-3510C	-	-	-	○ Large	Pearlescent white coating
Rose Coral NTL-3423C	✓	✓	-	○ Large	Pearlescent pink coating
Gold Treasure NTL-3212C	✓	-	-	○ Large	Pearlescent golden coating
Caviar NTL-3613C	✓	✓	-	○ Large	Pearlescent black coating
Lactose series					
RE-508*	✓	-	-	● Small	Matt red
UEL-611	✓	-	-	● Large	Matt blue
UEA-509	✓	✓	-	● Small	Matt blue
AGE-527	✓	-	-	● Small	Matt green
PE-524*	✓	-	-	● Small	Matt pink
YE-501*	✓	-	-	● Small	Matt yellow



White Shell NTL-3510C



Rose Coral NTL-3423C



Gold Treasure NTL-3212C



Caviar NTL-3613C



* Suitable for oral care

¹ Small: 500 - 900 µm / Large: 1000 - 1500 µm

Natural Unispheres®

Basic ingredients (INCI): Cellulose# (and) Xylitol (and) Tapioca Starch (and) Microcrystalline Cellulose (and) Hydrogenated Castor Oil (and) Simmondsia Chinensis (Jojoba) Seed Oil (and) Algin

#From Bamboo

Aspect / Additives: Pigments of mineral origin
Can be loaded (up to 10%) with vegetable or essential oil

Certification: Ecocert (Cosmos approval pending)



Size µm	Bamboo green ●	Terracotta (red/brown) ●	Natural white ○
500 - 900 ○	M0-811S	TO-809S*	WO-808S*
1000 - 1500 ○	M0-812L	TO-810L*	-

Luxury Unispheres®

Basic ingredients (INCI): Mannitol (and) Cellulose (and) Hydroxypropylcellulose



Aspect / Additives: Gemstone/Noble metal powder - See table below

Colours - Size	Light Blue ○	Red ●	Blue ●	Fawn-Gold ●
Reference	Diamond M	Ruby M	Saphirre M	Gold
Additive	Diamond gemstone powder	Ruby gemstone powder	Saphirre gemstone powder	22 Carat Gold powder

Cocktail Collection

Cocktail collection beads are based on mannitol or lactose, with various aspects and additives.
More details available on request.



Special effects during application!

For an amazing effect when using your cosmetics, Active Beauty has designed a variety of Unispheres® with special properties: from simple pigment release to white beads delivering a hidden colour, through beads generating a colourful foam!

Colour release

The Unispheres® technology adapted for high loading of pigments/glitters/shimmers that allows triggering instant radiance, whitening or even glamour touch.

Reference	Colours - Size ¹	Aspect/Effect
Flashwhite WVRM-716SP	○ Small	Matt white / Instant skin whitening
F00M-508L	● Large	Light yellow / Golden glow (mica) release
NR0M-4885	● Small	Matt brown / Instant radiance
WG0M-385L	○ Large	Sparkling white/ Instant glamorous shine

New Colour Explosion Collection

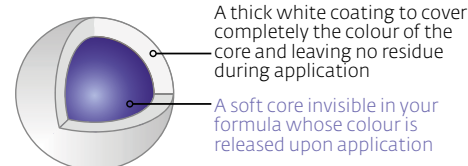
Make your bath rituals become an unforgettable experience with these beads generating a colourful foam! Usable in any foamy product (bar or liquid soaps, shampoos, body washes, etc.)



Reference	Colours - Size ¹	Aspect/Effect
Blue Explosion UF0M-774S ²	● Small	Matt blue / Blue foam burst
Green Explosion GF0M-776S ³	● Small	Matt green / Green foam burst
Red Explosion RF0M-777S	● Small	Matt red / Red foam burst

Bicolour Unispheres®

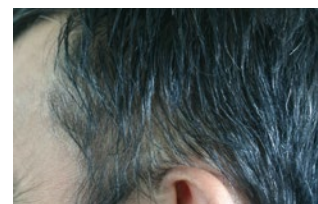
This new generation of colour changing beads is based on a unique technology to create new metamorphosis effects in your white emulsions and creams. Specially designed for use in make ups, concealers, hair styling creams.



Reference	Colours - Size ¹	Aspect/Effect
WNRM-558SBi	○ Small	Matt white / Brown colouration
WNRM-665VSBi	○ Very small	Matt white / Beige colouration
Flashtone G WGRM-746SBi	○ Small	Matt white / Green to conceal redness
Flashtone P WPRM-748SBi	○ Small	Matt white / Purple for healthy complexion
Flashtone Y WYRM-744SBi	○ Small	Matt white / Yellow to mute dark circles
Colourboosting SBRM-767SBi	● Small	Pearlescent silver / Black colouration



Before colourboosting's application



After colourboosting's application

¹ Very small: 350 - 700 µm; Small: 500 - 900 µm; Large 1000 - 1500 µm

² Not to be used in the US

³ Not to be used in the US, Mercosur or Japan

Unispheres® XS

Xtra Smart beads: Extra Small size for Extra Big Visual effects

- ▶ Loaded with Vitamin E to protect skin from oxidation
- ▶ 5 existing standards of different colours (white, yellow, red, green & blue)
- ▶ Small is stylish, smart and sophisticated

Basic ingredients (INCI): Cellulose (and) Mannitol (and) Tocopheryl Acetate (and) Hydroxypropyl Methylcellulose

Additive: Vitamin E (1%) (maintaining healthy skin barrier by preventing squalene oxidation)

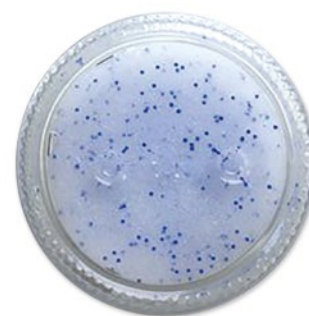
Size: 200 – 500 µm

Reference	Colours	Vitamin E
WE0M-572XS*	○ White	✓
YE0M-573XS*	● Yellow	✓
RE0M-574XS*	● Red	✓
GE0M-575XS	● Green	✓
UE0M-576XS	● Blue	✓

Extra-small (XS) Unispheres®
at 0.3%



Small Unispheres®
at 0.8%



Gel containing 3% Biogomm'age WD100 and Unispheres®



WE0M-572XS*



YE0M-573XS*



RE0M-574XS*



GE0M-575XS



UE0M-576XS*

Our customised solutions for Unispheres®

As a world leader in high quality visual carriers, we offer an impressive range of customisation possibilities such as:

- ▶ Changing the colour (including loading pigments that have been carefully selected to meet global regulatory standards in many countries);
- ▶ Modifying size of the beads from three available ranges (very small 350-700 µm; small 500-1000 µm; large 1000-1500 µm);
- ▶ Entrapping functional ingredient (actives, oils, perfumes...);
- ▶ Adjusting the rub-off properties of beads for your final base.

We offer you a world of exclusive opportunities, so do not hesitate to contact your sales representative for any specific customisation request.

Note: no customisation available on the XS range.

Summary

General information

Active Beauty is a gold standard of quality and consistency in the field of visual carrier systems. Our Unispheres® and Unishapes technologies are based on our unique manufacturing process that creates spherical beads or 3D shapes from cellulose and sugars. For many years, our experts have improved and perfected this technology thus enabling us to offer you never-ending possibilities of customisations.

Unispheres® and Unishapes are optimised for visualisation of active ingredients and to enhance the appeal of your cosmetic products. Delivered dry, they have the incredible property of transforming to a soft and crushable bead or shape in the finished product that disappears with a gentle rub without leaving any shell residue on skin or hair. Unispheres® and Unishapes are easy to process at the industrial scale and do not contain any preservative.

Technical data

Composition: Polyols (Mannitol, Lactose or Xylitol) & micro-crystalline cellulose.

Additives: Pigments (up to 50%)
Non water soluble ingredients (up to 10%)
▶ Such as vitamins, vegetal or essential oils, perfumes, vegetal extract...

Size: Large 1000 - 1500 µm (average 1250 µm)
Small 500 - 900 µm (average 750 µm)
Very small 350 - 700 µm (average 500 µm)

Homogeneity: Perfect gauss distribution of our beads
(see graph on the right)

Preservation: Preservative free

Solubility: Virtually insoluble in water, oils and all other common cosmetic vehicles

Properties: Leave no shell or residues during application on skin or hair
Stable to light, over a wide range of pH (3 to 10) and temperatures

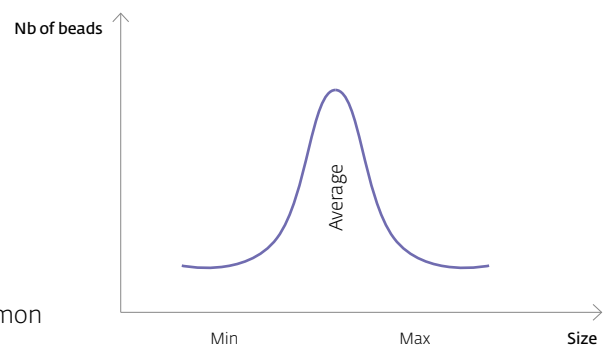
Dosage: 0.1% to 2% for visual effect and up to 10% for colour/active delivery

Storage: Temperature between 5 and 25°C

Formulation tips: A minimum of 30% of free water is recommended in the formula to soften the beads

Processing: ▶ Should be added at the end of the manufacturing, at moderate temperature and at slow stirring.
▶ Shearing or other strong mechanical stresses should be avoided during all manufacturing and filling procedures.
▶ Filling of the final product should be done as soon as possible (during 1 to 24 hours) after the addition of Unispheres® and Unishapes by using a membrane, peristaltic or piston pump.

Applications: Can be used in many types of cosmetic products (including oral care for the references with a * in this document):
▶ Clear formulations: gels, shampoos, liquid soaps, antiperspirants, deodorants, toothpastes and tooth gels, ...
▶ Emulsions: cleansers, creams and lotions, hair conditioners.



Givaudan Active Beauty Sales Offices

Europe

Givaudan France SAS
19-23 rue de la Voie des Bans
FR-95100 Argenteuil (France)

Givaudan UK Ltd
Magna House, 76-80 Church Street
Staines, TW18 4XR (United Kingdom)

Naturex SA
250 rue Pierre Bayle - BP 81218
84911 Avignon Cedex 9 (France)

North America

Givaudan Fragrances Corp.
40 W - 57th Street - Floor 17
NY 10019 - New York (United States)

Asia Pacific

Givaudan Singapore Pte Ltd
1 Pioneer Turn
627576 Singapore (Singapore)

Givaudan Shanghai Ltd
298 Li Shi Zhen Road
Pudong Zhang Jiang High Tech Park
201203 Shanghai (China)

Latin America

Givaudan do Brasil Ltda
Av. Eng^º Billings
2185, Edifício 31, 1^ºAndar - Jaguaré
05321-010 São Paulo - SP (Brazil)

global.cosmetic@givaudan.com

The data in this document ("Data"): (i) has been prepared by Givaudan in accordance with Givaudan's internal protocols and procedures; (ii) is provided to Customer for its information and internal use only; (iii) is provided without warranty of any kind, including, without limitation, any implied warranty of accuracy, merchantability, fitness for particular purpose or non-infringement of third party intellectual property rights. In no event shall Givaudan be liable to Customer or any third party for any losses, indemnities or damages of any kind (including, without limitation, any and all direct, special, indirect, incidental, or consequential damages or lost profits or revenues) that may arise out of, or in connection with, the use of the Data by Customer. Customer is solely responsible for assessing the accuracy and reliability of the Data for its own purposes (including, without limitation, Customer's end-use applications), and assumes all risks and liabilities arising out of or in connection with the use of the Data. CATALOGUE-VISUAL CARRIER INGREDIENTS-06.19